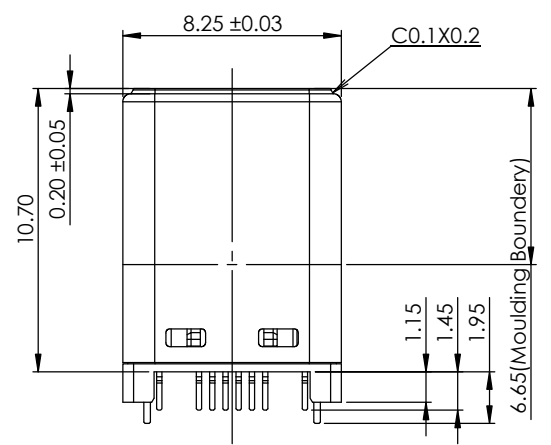
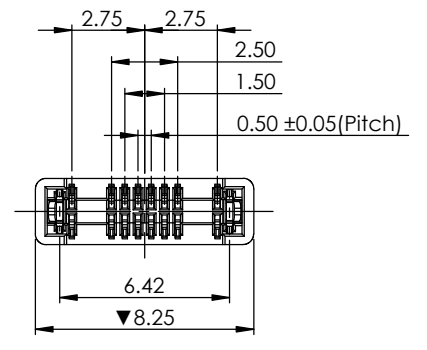
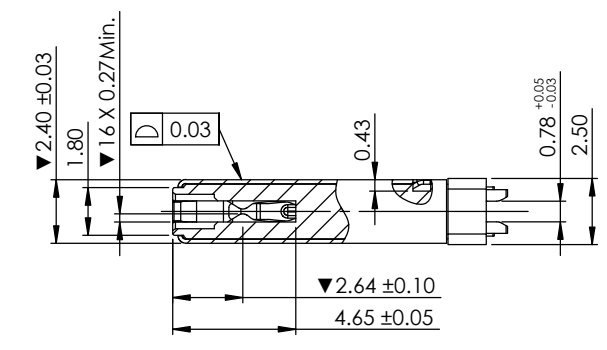
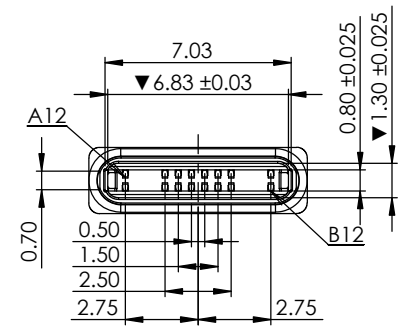


| PIN ASSINGMENT |     |     |      |       |    |    |      |      |     |     |     |
|----------------|-----|-----|------|-------|----|----|------|------|-----|-----|-----|
| A12            | A11 | A10 | A9   | A8    | A7 | A6 | A5   | A4   | A3  | A2  | A1  |
| GND            | /   | /   | VBUS | SBU1  | D- | D+ | CC   | VBUS | /   | /   | GND |
| GND            | /   | /   | VBUS | VCONN | D+ | D- | SBU2 | VBUS | /   | /   | GND |
| B1             | B2  | B3  | B4   | B5    | B6 | B7 | B8   | B9   | B10 | B11 | B12 |



| ITEM | NAME    | Q'TY | MATERIAC          | FINISHED                                                                                                               |
|------|---------|------|-------------------|------------------------------------------------------------------------------------------------------------------------|
| 4    | SHELL   | 1    | SUS316 L T=0.15mm | Ni PLATING OVER ALL                                                                                                    |
| 3    | LATCH   | 2    | SUS301 H T=0.25mm | Ni PLATING ON SOLDER TAIL AREA                                                                                         |
| 2    | HOUSING | 1    | PA46 MC50         | HIGH TEMPERATURE PLASTIC<br>HF, UL94V-0, BLACK                                                                         |
| 1    | CONTACT | 16   | C7035 T=0.20mm    | OVER ALL: 80u*MIN Ni PLATING<br>CONTACT AREA: 30u*MIN Pd-Ni PLATING+2u*MIN Au PLATING<br>SOLDER TAIL AREA: 100u*MIN Sn |

| REV. | ECN NO. | DESCRIPTION | DATE       | UNITS:<br>mm        | GENERAL TOLERANCE                               | DRAW:           | PART NO:                               |
|------|---------|-------------|------------|---------------------|-------------------------------------------------|-----------------|----------------------------------------|
| X1   |         | NEW         | 11/22/2019 | DATE:<br>11/22/2019 | X. ±0.20<br>.X ±0.15<br>.XX ±0.10<br>.XXX ±0.05 | GTP             | UC45-0B1184T0                          |
|      |         |             |            | SCALE:<br>5 / 1     | X." ±2.00"<br>.X" ±1.00"<br>.XX" ±0.50"         | CHECKED:        | TITLE:<br>TYPE C PLUG CUSTOMER DRAWING |
|      |         |             |            | SHEET:<br>1 / 2     | MATERIAL:                                       | APPROVE:<br>Air | DRAWING NO:<br>C-UC45-00-00            |
|      |         |             |            | REV.<br>A           | FINISH:<br>SEE NOTE                             |                 |                                        |


**鸿日达科技股份有限公司**  
 HONGRIDA ELECTRONIC TECHNOLOGY CO., LTD.

1 2 3 4 5 6 7 8

A

B

C

D

E

F

A

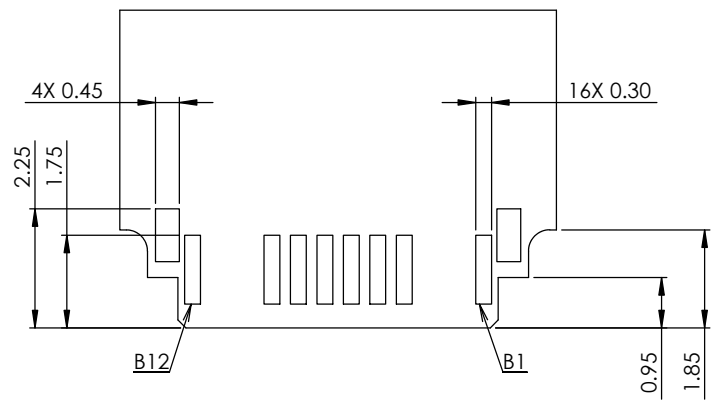
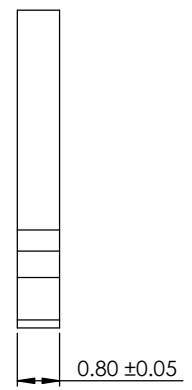
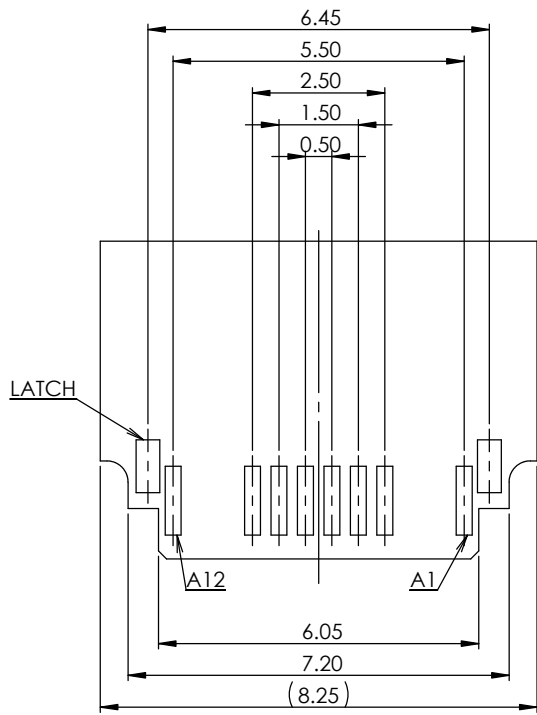
B

C

D

E

F



CONNECTOR NUMBER CODE

UC45- 0 B 118 4 T 0  
 ---- - - - -  
 1 2 3 4 5

1:PRODUCT DESCRIPTION:  
 UC45:USB 2.0 TYPE C 16pin PLUG DRAWN SHELL TYPE

2:PRODUCT TYPE  
 0:SMT TYPE

3:COLOUR OF HOUSING  
 B:BLACK

4:PRODUCT LENGTH  
 118:11.80mm

5:CONTACT PLATING  
 4: Pd-Ni 30u" + Au2u"ON CONTACT AREA

NOTES:

- 1.PRODUCT SPECIFICATIONS:
  - 1-1.CURRENT RATING: 5A MIN.
  - 1-2.INSULATION RESISTANCE: 1000MΩ Min
  - 1-3.CONTACT RESISTANCE:30mΩ Max(INITIAL),40mΩ MAX AFTER TEST
  - 1-4.WITHSTANDING VOLTAGE STRENGTH:100V AC FOR 1 MINUTE
  - 1-5.INSERTION FORCE:6-20N, AFTER DURABILITY: 5-20N
  - 1-6.EXTRACTION FORCE:8-20N, AFTER DURABILITY:6-20N
  - 1-7.DURABILIT: 10000 CYCLES
  - 1-8.SALT SPRAY TEST:48H FOR SHELL,72H FOR CONTACT
- 2.DIMENSIONS MARKED WITH "▼" MUST BE MEASURED BY QC AND IPQC.
- 3.RoHS2.0 AND HF COMPLIANT.

|      |         |             |            |                     |                     |           |                 |                                        |
|------|---------|-------------|------------|---------------------|---------------------|-----------|-----------------|----------------------------------------|
|      |         |             |            | UNITS:<br>mm        | GENERAL TOLERANCE   |           | DRAW:<br>GTP    | PART NO:<br>UC45-0B1184T0              |
|      |         |             |            | DATE:<br>11/22/2019 | X. ±0.20            | X. ±2.00  | CHECKED:        | TITLE:<br>TYPE C PLUG CUSTOMER DRAWING |
|      |         |             |            | SCALE:<br>5 / 1     | .X ±0.15            | .X ±1.00  | APPROVE:<br>Air | DRAWING NO:<br>C-UC45-00-00            |
|      |         |             |            | SHEET:<br>2 / 2     | .XX ±0.10           | .XX ±0.50 |                 |                                        |
| X1   |         | NEW         | 11/22/2019 | MATERIAL:           | .XXX ±0.05          |           |                 |                                        |
| REV. | ECN NO. | DESCRIPTION | DATE       | REV.<br>A           | FINISH:<br>SEE NOTE |           |                 |                                        |

 鸿日达科技股份有限公司  
 HONGRIDA ELECTRONIC TECHNOLOGY CO., LTD.

1 2 3 4 5 6 7 8