

- NOTES:
- ALL DIMENSIONS MARKED ▼ MUST BE CONTROLLED BY QC
 - RATED PARAMETERS OF CONNECTOR
 - Operating temperature: -55° C to 85° C
 - Rated Current: 0.5A/PIN
 - Rated Voltage: 30V AC/DC Per Contact
 - Contact Resistance: 100mΩ MAX
 - ELECTRICAL MECHANICAL ENVIRONMENT
 - Dielectric withstanding Voltage : 500V AC 1min.
 - Insulation Resistance: 100 MΩMin.
 - Normal Force : 30~100g PIN
 - Insertion Force: 1.0Kg Max
 - Extraction Force: 0.2Kg Min
 - Durability: 3000 cycles
 - PART NO

S100-OB22F14F

CARD SERIES _____ Alternate
 FINISHED PRODUCT _____ 1.45H
 TYPE _____ Au 1~3u"
 BLACK _____ PIN NO

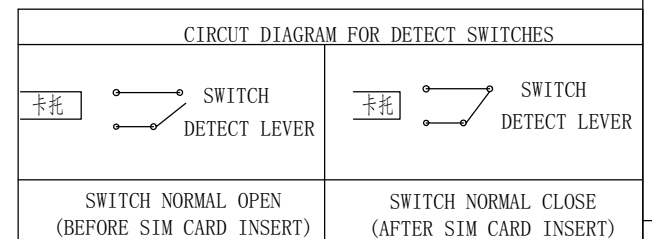
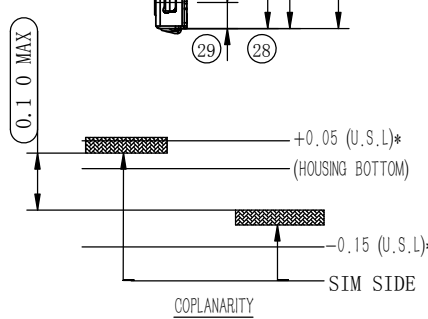
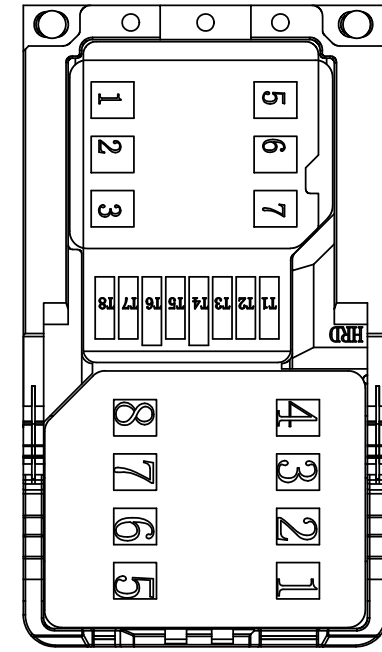
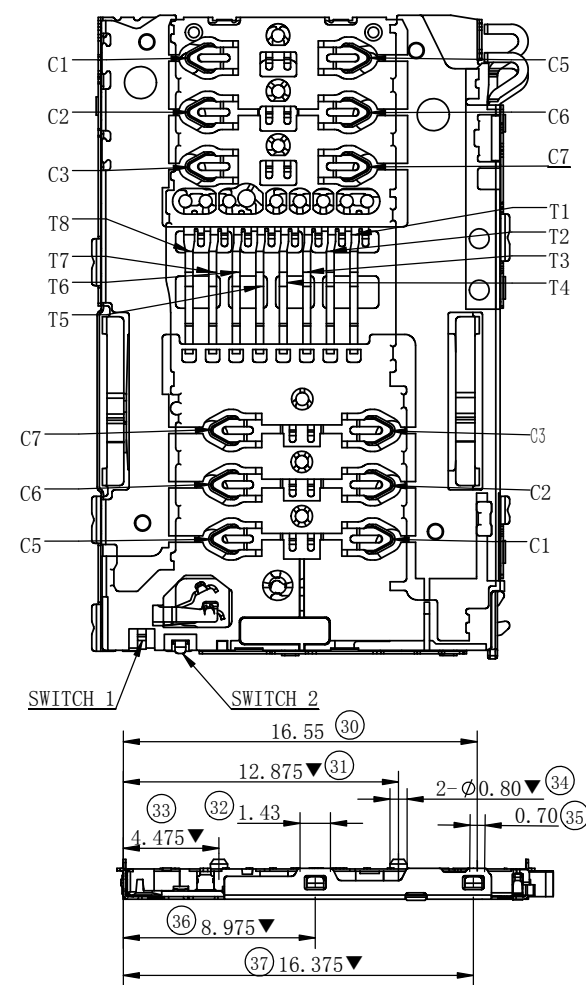
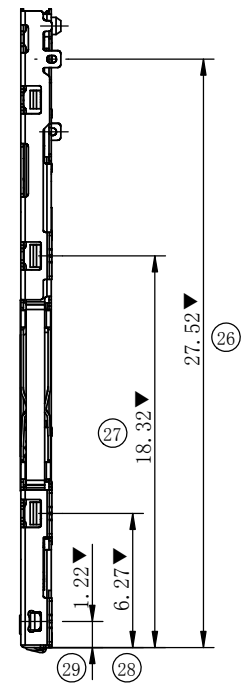
6	Eject Bar	SUS304-3/4H	NA
5	Eject Lever	SUS304-3/4H	NA
4	Switch	C5210-SH	50U" NI MIN UNDER PLATED OVER ALL GOLD FLASH 1~3U" ON CONTACT AND SOLDER AREA
3	Contact	C5240-SH	50U" NI MIN UNDER PLATED OVER ALL GOLD FLASH 1~3U" ON CONTACT AND SOLDER AREA
2	Shell	SUS304-3/4H	30U" NI MIN UNDER PLATED OVER ALL GOLD FLASH 1~3U" ON SOLDER AREA
1	Housing	LCP-S475	NA
ITEM	NAME	MATERIAL	PLATING

I	E1611507A	杠杆比变更	11/23/2016	UNITS: mm	GENERAL TOLERANCE		DRAW:	PART NO:
H	E1607281A	图面更新	07/18/2016	DATE: 08/26/2015	X. ±0.25	X.' ±5.00'	CHECKED:	TITLE:
G	E1604117A	铁壳变更	04/11/2016	SCALE: 4/1	.X ±0.15	.X' ±3.00'	APPROVE:	SIM CARD & TF CARD 成品H=1.45H
F	E1603088A	铁壳柱子孔变更	03/28/2016	SHEET: 1/3	.XX ±0.10	.XX' ±1.00'	APPROVE:	DRAWING NO:
REV.	ECN NO.	DESCRIPTION	DATE	REV. A	MATERIAL:		FINISH: SEE NOTE	

VD 昆山捷皇电子精密科技有限公司
 HONGRIDA ELECTRONIC TECHNOLOGY CO., LTD.

A
B
C
D
E
F

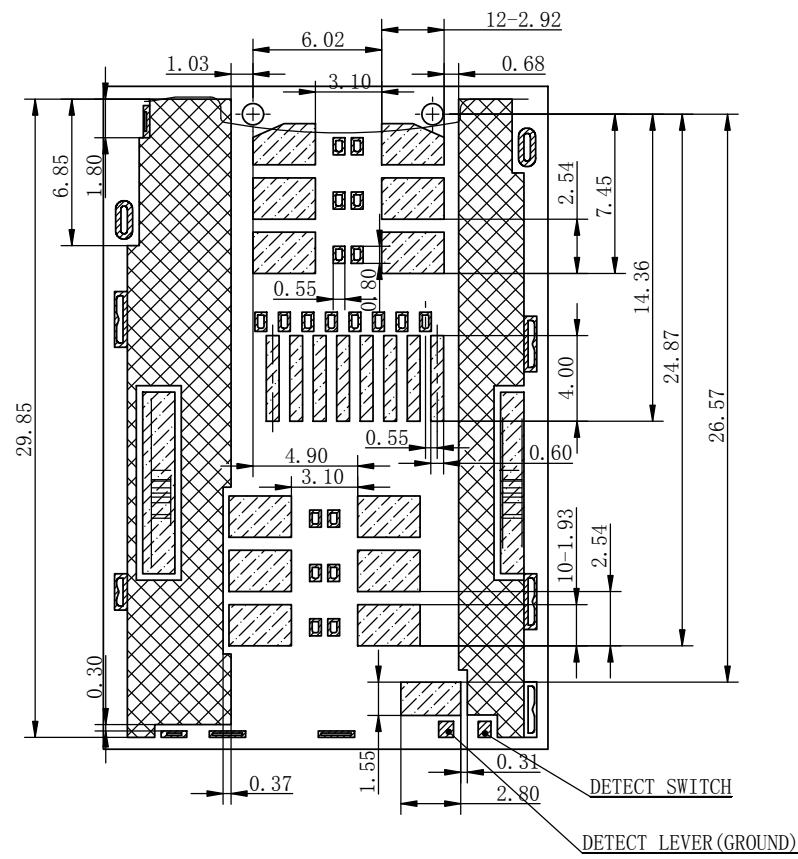
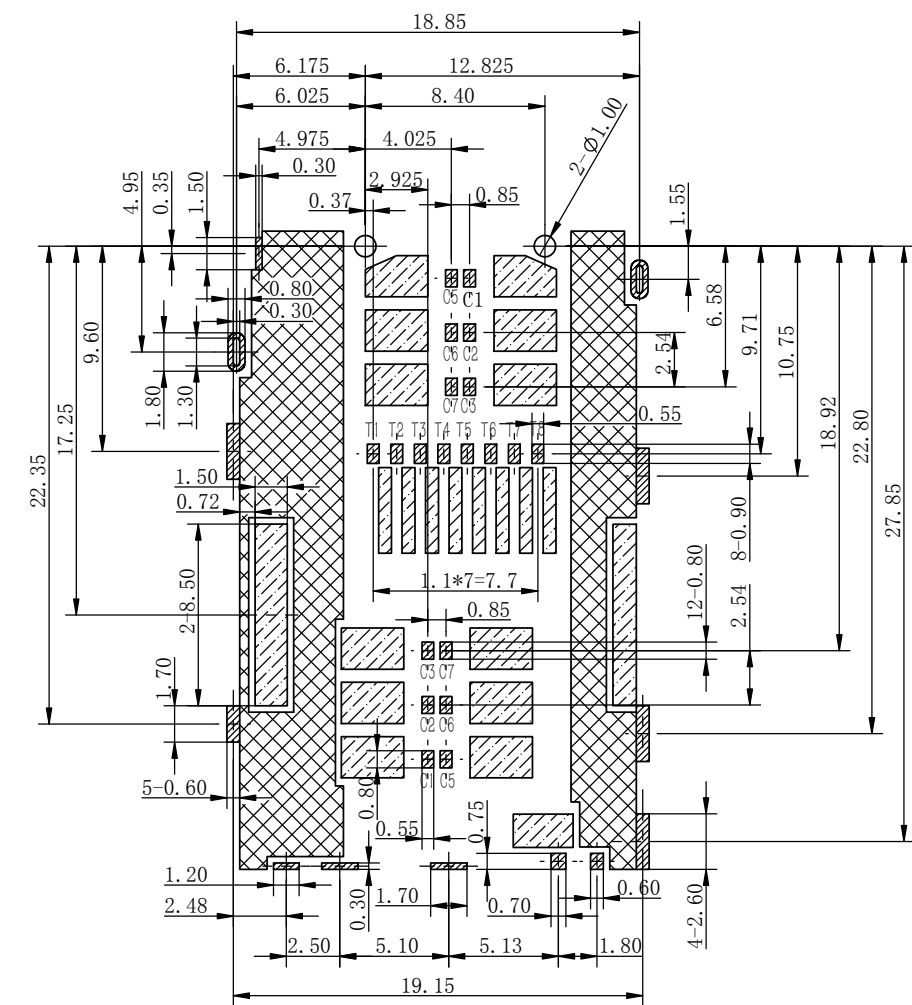
1 2 3 4 5 6 7 8



SIM CARD PIN NO.	PIN NO.	T-CARD PIN NO.	PIN NO.
C1	VCC	T1	DAT2
C2	RST	T2	CD/DAT3
C3	CLK	T3	CMD
	RESERVED	T4	VDD
C5	GND	T5	CLK
C6	VPP	T6	VSS
C7	I/O	T7	DATO
	RESERVED	T8	DAT1
s/w	SWITCH PIN		

REV.	ECN NO.	DESCRIPTION	DATE	REV.	FINISH: SEE NOTE	SCALE:	MATERIAL:	DRAW:	PART NO:
I	E1611507A	杠杆比变更	11/23/2016	UNITS: mm		GENERAL TOLERANCE			S100-0B22F14F
H	E1607281A	图面更新	07/18/2016	DATE: 08/26/2015		X. ±0.25 .X ±0.15 .XX ±0.10 .XXX ±0.05		CHECKED:	TITLE: SIM CARD & TF CARD 成品H=1.45H
G	E1604117A	铁壳变更	04/11/2016	SCALE: 4/1		.XX' ±1.00'		APPROVE:	DRAWING NO:
F	E1603088A	铁壳柱子孔变更	03/28/2016	SHEET: 2/3					

 昆山捷皇电子精密科技有限公司
HONGRIDA ELECTRONIC TECHNOLOGY CO., LTD.



- Soldering Pad Area (焊接区)
- Pattern Keep Out Area (禁布可接地区)
- Through Hole (通孔)
- For contac friction area (禁布区)

PCB LAYOUT TOLERANCE: ±0.05
METAL MASK THICKNESS: 0.10MM

I	E1611507A	杠杆比变更	11/23/2016	UNITS: mm	GENERAL TOLERANCE		DRAW:	PART NO: S100-0B22F14F
H	E1607281A	图面更新	07/18/2016	DATE: 08/26/2015	X. ±0.25	X' ±5.00'	CHECKED:	TITLE: SIM CARD & TF CARD 成品H=1.45H
G	E1604117A	铁壳变更	04/11/2016	SCALE: 4/1	.XX ±0.10	.XX' ±1.00'	APPROVE:	DRAWING NO:
F	E1603088A	铁壳柱子孔变更	03/28/2016	SHEET: 3/3	MATERIAL:		昆山捷皇电子精密科技有限公司 HONGRIDA ELECTRONIC TECHNOLOGY CO., LTD.	
REV.	ECN NO.	DESCRIPTION	DATE	REV. A	FINISH: SEE NOTE			